

# Technic ARC & ARC TE

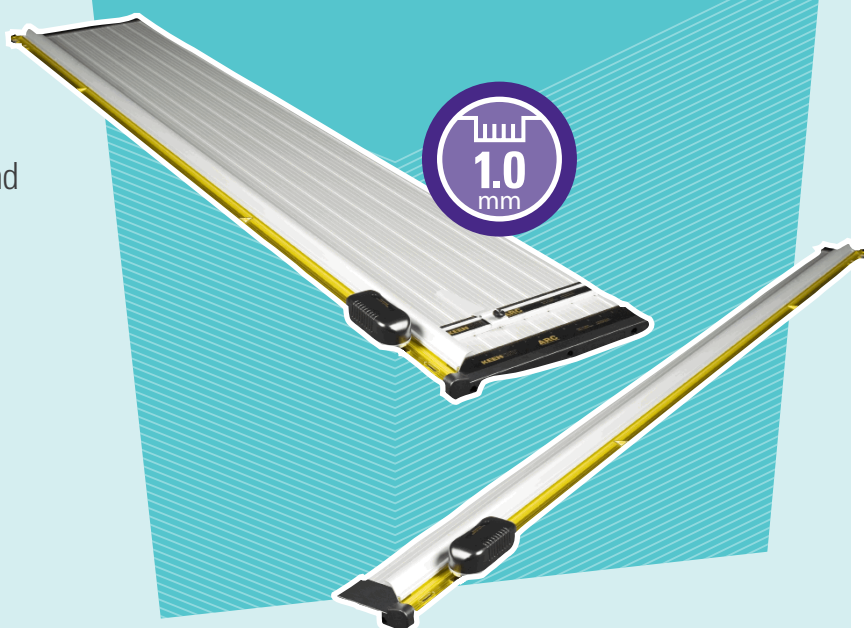
Advanced rotary cutters for paper and film

**KEENCUT**

THE WORLD'S FINEST CUTTING MACHINES

**Designed for high precision cutting of paper and film over lengths of up to 3m. Ideal for education, drawing offices, photographic studios and large format printing environments**

- Keencut cutters are the most accurate on the market
- Guaranteed 1.0mm straightness over the full length of the cut
- Specifically designed for cutting paper and film
- Precision scissor cutting action for a professional finish on delicate materials
- Unobstructed view of cut line
- Maximum clamping for material stability
- Safety by design
- Simple and instinctive operation
- Calibrated for immediate 'out of the box' accuracy
- Manufactured and finished with premium quality materials
- Guaranteed for 5 years



ARC (table top cutter) available in 5 sizes from 107cm to 305cm

ARC TE (table edge mounted) available in 5 sizes from 100cm to 300cm

## Perfect for cutting ...

### Semi-rigid materials

- Card and mountboard up to 1mm

### Flexible materials

- Paper and tissue paper
- Film and self-adhesive vinyls

**KEENCUT**

If your material is not in the list above we offer a free test cut service - for details please email [sales@keencut.co.uk](mailto:sales@keencut.co.uk)

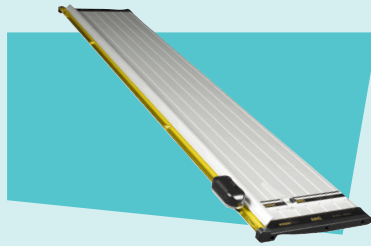
**MADE IN  
BRITAIN**



**High Precision** - Guaranteed to cut within 1.0mm of a straight line for the whole length of the cutter

## Technic ARC

Comes with an integral aluminium base plate suitable for placing directly on a work surface or fixed to the optional stand or stand pack.



## Technic ARC TE

Turns a standard workbench into a functional and convenient cutting station. With no base plate, the cutter can be neatly fitted directly onto the edge of a work table, as shown in the image.



## Ease of use

Two tungsten steel cutting wheels run along a full-length stainless steel fixed blade strip giving performance and durability.

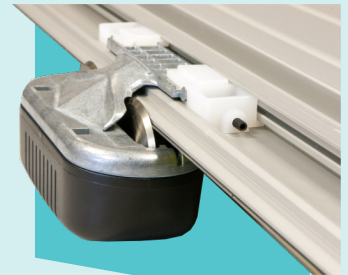
Cuts easily in both directions providing effortless one-handed trimming. Operation is aided as there is no overhead rail to obstruct visibility of cut line.



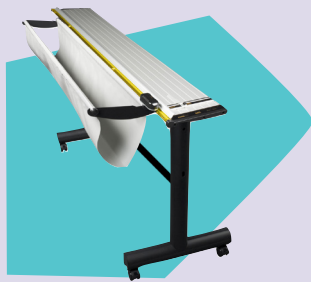
## Accuracy and versatility

Monorail bearing system controls the position of the cutting wheels with the cutting edge to ensure maximum accuracy over the full distance of the cut.

Twin clamping rollers within the cutting head ensure that the work material does not move during cutting.



## OPTIONAL EXTRAS AND ACCESSORIES



### Stand or stand pack

An anodised aluminium 90cm/36" high stand fitted with locking castors to enable quick positioning where required.

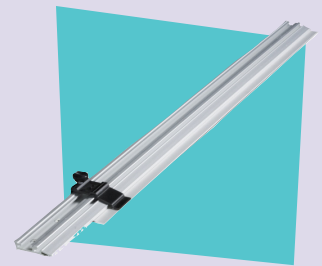
The stand pack option includes a 90cm/36" high stand, waste catcher and material roll holder to hold rolls up to 122cm/48" long.

### Extended measuring arm

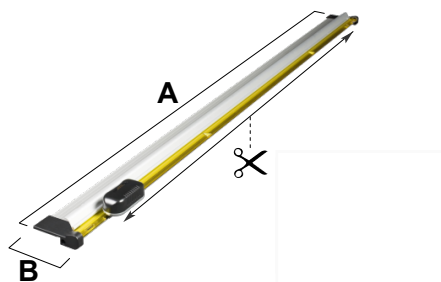
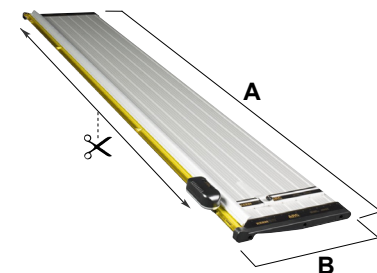
For Technic ARC only.

Add a 91cm/36" measuring arm to improve accuracy and versatility.

Comes complete with measuring stop.



## DIMENSIONS



	ARC107	ARC152	ARC203	ARC254	ARC305
Cut Length	106cm (42")	152cm (60")	203cm (80")	254cm (100")	305cm (120")
A	133cm (52.5")	179cm (70.5")	231cm (91")	280cm (110.25")	332cm (130.75")
B	43.5cm (17")	43.5cm (17")	43.5cm (17")	43.5cm (17")	43.5cm (17")
Packed Weight	11kg (24lbs)	14kg (31lbs)	18kg (40lbs)	22kg (48lbs)	25kg (55lbs)
Packed Dimensions cm (")	141x50x11cm (55x20x4")	187x50x11cm (74x20x4")	243x50x11cm (113x20x4")	288x50x11cm (113x20x4")	340x50x11cm (134x20x4")

	ARCTE100	ARCTE150	ARCTE200	ARCTE250	ARCTE300
Cut Length	100cm (40")	150cm (60")	200cm (80")	250cm (100")	300cm (120")
A	133cm (52.5")	179cm (70.5")	231cm (91")	280cm (110.25")	332cm (130.75")
B	13cm (5.25")	13cm (5.25")	13cm (5.25")	13cm (5.25")	13cm (5.25")
Packed Weight	4kg (8.8lbs)	5kg (11lbs)	6.5kg (14lbs)	23kg (51lbs)	28kg (62lbs)
Packed Dimensions cm (")	143x17x17cm (56x7x7")	190x17x17cm (75x7x7")	241x17x17cm (95x7x7")	288x20x18cm (113x8x7")	338x20x18cm (133x8x7")