

IDEAL 2503

Our entry model in the category of office document shredders with 260 mm feed opening and a large shred bin capacity.

Level P-2 4 mm strip cut

Sheet capacity*: 21-23 | 18-20

Level P-4 4 x 40 mm particle cut

Sheet capacity*: 16-18 | 13-15

Level P-5 2 x 15 mm particle cut

Sheet capacity*: 10-12 | 8-10

* A4 paper 70 g/m² | 80 g/m²

max.
23
sheets

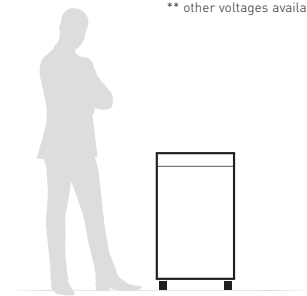
← **26 cm** →



Technical specifications

Volume	100 litres (cabinet) 75 litres (shred bin)
Power	230 V / 50 Hz**
Motor capacity	580 Watt single phase motor

** other voltages available



Dimensions	870 x 500 x 377 mm (H x W x D)
Weight	30 kg / 30.5 kg (particle cut)
ID-No.	11250203
GS certificate-No.	DP 10034

Product characteristics

SPS – (Safety Protection System) package: patented, electronically controlled, transparent safety flap in the feed opening as additional safety element; EASY-SWITCH – intelligent control element indicating the operational status of the shredder with varying colour codes and back-lit symbols; automatic reverse and power cut-off (avoids paper jams); automatic stop if the shred bin is full; electronic door protection via a magnetic proximity switch; double motor protection; ZERO ENERGY standby mode: Complete, automatic disconnection from power supply after 30 minutes. Photo cell controlled automatic start and stop. High-quality, paper clip proof cutting shafts from special hardened steel with lifetime guarantee. Strip cut model suitable for shredding the most common CDs/DVDs. Quiet but powerful single phase motor. Fully closed gear box housing and durable gears. High-quality wooden cabinet, mobile on castors. Convenient environmentally-friendly shred bin (no disposable shred bags required).

IDEAL

IDEAL 2503

Features



SOLID STEEL CUTTING SHAFTS

Robust and durable: high-quality paper clip proof cutting shafts with lifetime guarantee under conditions of fair wear and tear.



EASY-SWITCH

Ease of operation: intelligent multifunction switch element with integrated optical signals indicating the operational status. Additional "emergency switch" function.



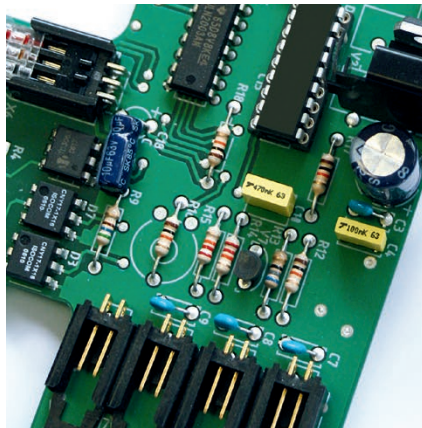
PATENTED SAFETY FLAP

Extremely safe: electronically controlled safety flap in the feed opening to keep fingers, ties or other objects away from the cutting shafts.



CONVENIENT SHRED BIN

The environmentally-friendly shred bin can be removed easily and cleanly from the cabinet. The bin can be used with or without disposable shred bag.



AUTOMATIC FUNCTIONS

Tried and tested: Reliable printed circuit board controlling all automatic functions of the shredder including the energy saving mode.



FIRST-CLASS COMPONENTS

Quality in every detail: cabinet with adjustable metal hinges and attractively designed swivel castors.



IDEAL

The technical data are approximate. Subject to change. 12/2015

RICHTER & MENZEL GmbH

Südstraße 28 ♦ 09221 Neukirchen
Tel. 03 71 / 33 42 64 - 0 ♦ Fax 03 71 / 33 42 64 - 90

RICHTER & MENZEL GmbH - Ndl. Mannheim

Chemnitzer Str. 6-8 ♦ 68309 Mannheim
Tel. 0621 / 72 49 47 - 0 ♦ Fax 0621 / 72 49 47 - 29

Internet: www.richter-menzel.de ♦ E-mail: kontakt@richter-menzel.de

certificate
no. **DP 15044**
dated 2015-03-25

Translation In any case, the German original shall prevail.

GS Certificate

Name and address of the holder of the certificate: (customer) Krug & Priester GmbH & Co. KG
Simon-Schweitzer-Straße 34
72336 Balingen

Product designation: **file shredder**

Type: 11231001, 11236001, 11240401, 11241001, 11244501, 11246501, 11250203

Testing based on: DIN EN 60950-1:2014 Information Technology Equipment – Safety – Part 1: General requirements
EN 60950-1:2006+A11:2009+A1:2010+A12:2011 Information Technology Equipment – Safety – Part 1: General requirements
IEC 60950-1:2005+AMD1:2009+AMD 2:2013 Information Technology Equipment – Safety – Part 1: General requirements
EN 1010-1:2004+A1:2010 Safety of machinery – Safety requirements for the design and construction of printing and paper converting machines; Part 1: common requirements

Test report: 612.17 - So/Ho
A 14199
Produktgruppe: 001.1001

Further details:

The type tested meets the requirements specified in article 21 para. 1 of the German Product Safety Act. The holder of the certificate is entitled to affix the GS mark shown overleaf to the products complying with the type tested. At that, the holder of the certificate shall observe the conditions specified overleaf.

The present certificate including the right to affix the GS mark is valid until: **2020-03-24**

Further provisions concerning the validity, the extension of the validity and other conditions are laid down in the Rules of Procedure for Testing and Certification.



Dipl.-Ing. Andreas Vogl